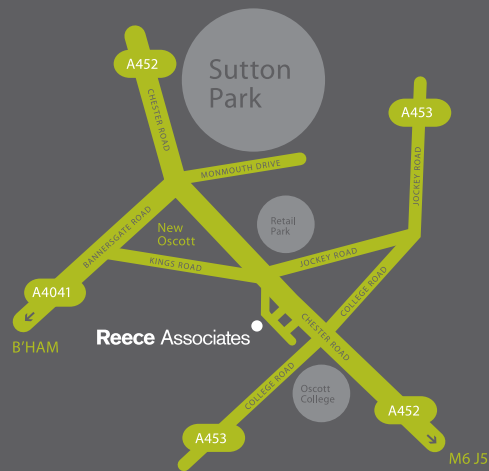


## how to find us



Reece Associates  
Dental Care  
Cosmetic Dentistry  
Facial Enhancements

**To make an appointment:**  
T 0121 355 5180  
or email  
hello@reeceassociates.co.uk

22a Chester Road, New Oscott,  
Sutton Coldfield, B73 5DA  
T 0121 355 5180  
F 0121 355 5979  
W reeceassociates.co.uk

Mon – Wed 8.30-18.00  
Thur 10.00-19.30  
Fri 8.30-13.00  
Sat 8.30-13.00

**Out of hours/  
emergencies**  
T 0121 355 5180



**Reece Associates**  
refresh. revitalise. recreate.

Issue 01 | 09 2009

# DEENTAL PLANS

FOR 11-17 YEAR OLDS



**Reece Associates**  
refresh. revitalise. recreate.

# Our dental plans

FOR 11-17 year olds



## Education & prevention

At Reece Associates we offer our younger patients the opportunity to join our Bronze, Silver or Gold Dental Plans. We have updated and improved our plans to include education and preventive care.

Enrolling in the right dental plan between the ages of 11 and 17 will allow children and young adults to 'catch up' with the oral-health education that was not available to them when they were younger.

We are certain that the new systems we use will reduce any worries your child may have and that dental visits will become fun, interactive and educational. We also believe that our proactive approach will result in less invasive treatment and save you money.

With our dental plans we explain about decay, how gum disease can develop, and the effects of food and drink on our teeth.

Habits are formed very early in life. The taste of toothpaste and perhaps that of a mouthwash leaves our mouths feeling 'clean', but the reality is often very different.

Your child should use a disclosing tablet after brushing. Any plaque left on their teeth will be shown up, and you can decide whether they are doing a good job or need additional support.

BRONZE  
SILVER  
GOLD

Education is the most important thing

## How our plans work

In addition to providing time with our dentists and dental hygienist / therapist our specially trained team will help teach the Gold and Silver Plan members to develop good oral health care habits by participation in educational and interactive sessions held in our innovative, state of the art Centre for Positive Oral Development (POD).

- We teach correct brushing techniques and encourage your child to practise at home.
- We use interactive technology and cameras to show your child on a television screen exactly what is happening in their mouth.
- We provide education and information on the rules about what to eat and drink. This means your child can eat the things they like, but in a way that can reduce the harmful effect on their teeth. By understanding the rules, they will know when to bend them!

### FACT

Any parent knows the difficulty in getting their children to routinely brush their teeth. The old trick of wetting the toothbrush and replacing it, is all too common!

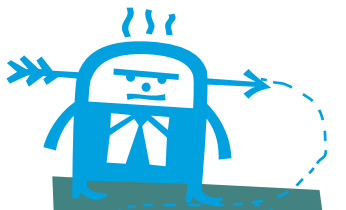
### FACT

Decay in teeth is a direct result of sugar in our diet

# Choosing the Right Plan

We offer three levels of dental care plan based on your child's needs – Bronze, Silver and Gold.

Please consider these carefully as it is important your child joins the plan that is right for them. For example, the Bronze Dental Plan is only suitable for very capable young people, or those with parents who will take a major role in the process.



## FACT

80 - 90% of the adult population suffer from gum disease.

## BRONZE

### Dental Plan:

This is the minimum maintenance plan – suitable for children who already have the highest standards of oral care who will carry out regular effective cleaning without additional encouragement and support.

They will be required to have a responsible and educated approach to what they eat and drink, which will help protect them from oral disease. This is the plan level we hope all children and young adults will eventually achieve. The faster they learn and progress, the more quickly this will be realised.

#### Benefits of the Bronze Dental Plan:-

- One 10-minute dental health check with your dentist each year
- One 20-minute appointment with the dental hygienist or therapist each year which includes basic instruction on oral hygiene
- Free routine x-rays, if needed
- 20% off the cost of dental treatment
- Access to our out-of-hours emergency dental service
- UK and worldwide emergency dental cover
- Insurance in case of accidental dental injury

To join this plan, your dentist will assess your child and they will need to be 'dentally fit'.

## SILVER

### Dental Plan:

This is the care and educational plan suitable for most children and young adults. It will be recommended because most already have some habits (eating and brushing) that need to be corrected.

We may need to see your child more in the early stage of membership to develop skills and to change eating patterns. As they improve their abilities, we aim to move them to the Bronze Dental Plan.

#### Benefits of the Silver Dental Plan:-

- One 10-minute dental health check with your dentist each year
- One 20-minute appointment with the dental hygienist or therapist each year
- Two 60-minute appointments in the POD with the dental health educator each year
- Free routine x-rays, if needed
- Disclosing teeth (using a tablet to stain the teeth to show plaque)
- Instructions in oral hygiene
- Advice sheets and discussion on your child's diet
- A record chart to use at home and disclosing tablets
- Periodontal assessment and recording
- An analysis of diet (if needed)
- 20% off the cost of dental treatment
- Access to our out-of-hours emergency dental service
- UK and worldwide emergency dental cover
- Insurance in case of accidental dental injury



## FACT

EARLY GUM DISEASE CAN BE FULLY REVERSED



# Choosing the right plan



Chronic gum disease has a direct correlation with chronic heart disease, strokes, lung infections and other medical conditions.



## Dental Plan:

**We have designed this plan to cover everything. As well as all the benefits of a Silver Plan, we include the cost of any dental treatment, if needed.**

We will monitor improvements and encourage progression to the Bronze or Silver Plans as it is suitable.

Benefits of the Gold Dental Plan:-

- One 10-minute dental health check with your dentist each year
  - Two 20-minute appointments with the dental hygienist or therapist each year
  - Two 60-minute appointments in the POD with the dental health educator each year
  - Free routine x-rays, if needed
  - Disclosing teeth (using a tablet to stain the teeth to show plaque)
  - Instructions in oral hygiene
  - Advice sheets and discussion on your child's diet
  - A record chart to use at home and disclosing tablets
  - Camera record and discussion of your child's mouth
  - Weekly text messaging to encourage your child to continue with the plan
  - Periodontal assessment and recording
  - An analysis of diet (if needed)
  - Fillings and fissure sealants if needed
  - Access to our out-of-hours emergency dental service
  - UK and worldwide emergency dental cover
  - Insurance in case of accidental dental injury
- To join this plan your dentist will assess your child and they will need to be 'dentally fit'.



Until now there has not been a cost-effective system to teach us to clean our mouths effectively, and the long-term result is gum disease. Gum disease results mainly from poor or incorrect brushing and flossing.

Long-term gum disease is responsible for the most tooth loss and is directly linked with long-term heart disease, strokes, lung infections and other medical conditions later in life.

From the age of about six our final set of natural teeth develop – these have to last us a lifetime. With life expectancy increasing, these teeth are becoming more and more precious.

Child obesity, poor diet and problems within the NHS are all making life more difficult for dentists and patients alike. By acting now we can put the long-term needs of our children first, and to do that we have to be preventive about our oral and general health. At Reece Associates, membership of our dental plans means we have found a way to make this prevention affordable.

## WHAT DOES THE SUPPLEMENTARY INSURANCE COVER?

Your Supplementary Insurance provides cover for:-

- Up to £10,000 worth of treatment following dental injury
- Temporary emergency treatment whilst away from home in the UK or abroad (up to the limits specified)
- The call-out fee charged by a dentist opening their surgery to treat you in an emergency (up to the limits specified)
- Hospital cash benefit if under the care of an oral/maxillofacial surgeon
- £1,000 cash benefit if diagnosed with oral cancer

- 24 hour access to our worldwide emergency helpline

The Supplementary Insurance is designed to cover the cost of temporary emergency treatment whilst you are away from home and therefore excludes the cost of emergency treatment carried out by your own dentist, a rota dentist, or any other dentist within a 15 mile radius of your practice. However, call-out fees charged by any dentist to open their surgery (including your own dentist) are recoverable up to policy limits.

- In the event of a dental injury, treatment carried out by any dentist (including your own dentist) is covered up to policy limits.

Please refer to the Policy Summary and Important Information leaflet and the Policy for full details of the benefits, terms, conditions and exclusions.